



# Q-Monitor Mobile App User Manual

# Table of Contents

Table of Contents	1
Logging In	2
Reset Password	3
Home	4
Devices Tab	4
Admin Users:	4
Cold Storage Devices	5
Details Tab	5
History Tab	6
Graph Tab	7
Alarms Tab	8
Admin Users	8
Adding or Editing an Alarm	9
Selecting a Date Range	10
Sidebar	11
Profile	12

# Mobile User Manual

## Logging In

The first time you use the Mobile App you will see the Login screen.

Enter your email address and password, then press the Login button to sign into the app. This will take you to the Home screen.

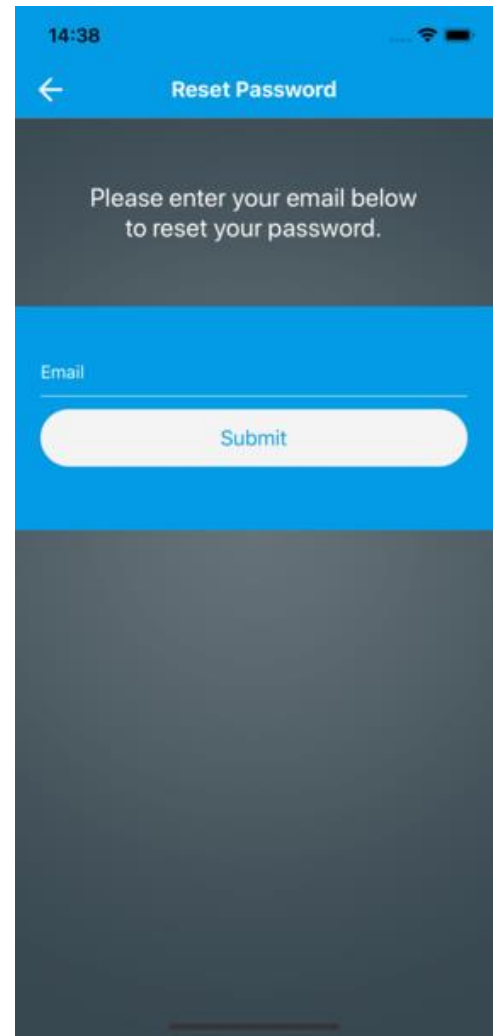
If you've forgotten your password, press the words "Forgot your password?", which will take you to the Reset Password screen.



# Reset Password

To reset your password, enter your password and press Submit. If your email address is valid, you will receive an email with further instructions for resetting your password.

Press the back arrow to return to the Login screen.



14:38

Reset Password

Please enter your email below to reset your password.

Email

Submit

# Home

After logging in you will see the home screen. It has two tabs – one for your company’s devices and another for your company’s gateways. The icon at the left of the header bar opens a sidebar with more options (see Sidebar, below).

## Devices Tab

The Devices tab has a scrolling list of cards that summarize the devices’ most important information. You can press a device card to open that device’s information screen (see Cold Storage Devices, below).

You can use the search bar in the header to filter devices by title and EUI.

Pressing the funnel icon in the lower left opens a screen that allows you to set a filter for the cards by Device Type or address.

## Admin Users:

To edit a device, pull the device card to the left and press the revealed button.

Press the plus button at the right end of the header bar to activate a device that has previously been registered for your company by Quaenet.

To delete a device, pull the device card to the right and press the revealed trash can button. You will be asked for confirmation. Note that deleting a device does not delete the data and history associated with the device. It can be activated again later with its data and history intact.

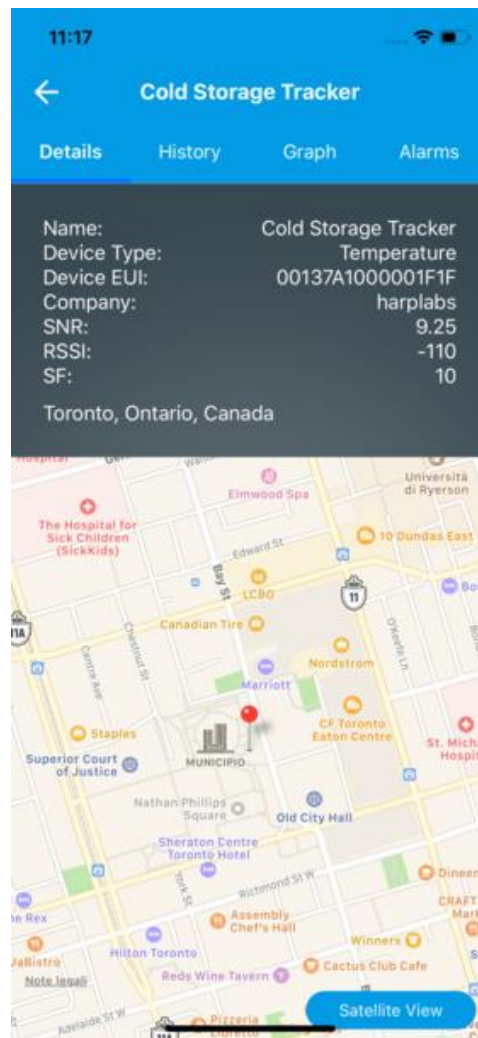


# Cold Storage Devices

The Cold Storage Device screen has four tabs: Details, History, Graph, and Alarms. To navigate to a tab, press its name in the tab bar. To return to the Home Screen, press the back arrow button to the left of the header bar.

## Details Tab

The Details tab contains more details about the device, as well as a map showing the location of the device. A button in the lower right corner of the map toggles between street view and satellite view for the map.



# History Tab

The history tab displays a scrolling list of all the readings the device has taken. Each row has a date and time, along with the temperature and humidity readings taken at that date and time.

The bottom of the tab allows you to view readings within a specific date range. See [Selecting a Date Range](#), below.



The screenshot shows the 'Cold Storage Tracker' app interface. At the top, the time is 11:36. Below the title 'Cold Storage Tracker', there are four tabs: 'Details', 'History', 'Graph', and 'Alarms'. The 'History' tab is selected. Below the tabs is a table with three columns: 'Date and Time:', 'Temperature:', and 'Humidity:'. The table contains 12 rows of data. At the bottom, there is a 'Time Interval:' section with a dropdown menu set to 'Custom'. Below this, there are two input fields: 'From: 03/25/2016 12:00 AM' and 'To: 03/25/2019 11:34 AM', each with a plus icon to its right.

Date and Time:	Temperature:	Humidity:
01/25/2019 3:55 PM	41.8° F	61.5%
01/25/2019 3:51 PM	77.0° F	20.2%
01/25/2019 3:21 PM	76.0° F	18.8%
01/25/2019 1:36 PM	89.6° F	13.3%
01/25/2019 1:20 PM	89.4° F	13.3%
01/25/2019 1:05 PM	89.1° F	13.4%
01/25/2019 12:35...	89.1° F	13.3%
01/25/2019 12:20...	88.7° F	13.3%
01/25/2019 12:05...	88.7° F	13.4%
01/25/2019 11:35 AM	88.2° F	13.5%
01/25/2019 11:20 AM	87.8° F	13.8%

Time Interval: Custom ▾

From: 03/25/2016 12:00 AM ⊕

To: 03/25/2019 11:34 AM ⊕

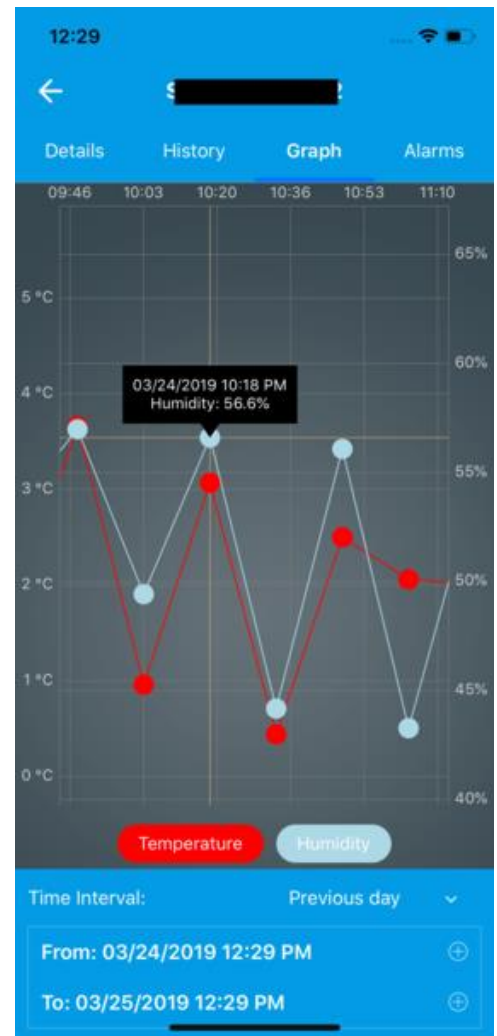
# Graph Tab

The graph tab presents a visual representation of the temperature and humidity data gathered by the device. It initially displays readings taken within the previous hour. A control at the bottom of the tab allows you to adjust the displayed date range – see [Selecting a Date Range](#), below.

The temperature data is shown in red and the humidity data is shown in blue. Press the Temperature or Humidity button to remove that data from the graph.

Press any point on the graph to display a tooltip with the reading at that point.

You can pan the graph to the left or right by swiping left or right on the graph. To zoom in, pinch the graph with two fingers, then move your fingers apart. To zoom out, put two fingers on the graph, then pinch them together.





# Alarms Tab

An alarm is a collection of minimum and maximum values for the temperature and humidity of the device. If a reading is received by Quaenet's server that is outside any of these ranges, you will receive a notification on your phone or tablet.

The Alarms Tab presents a scrollable list of alarm cards. Each card displays the minimum and maximum values of temperature and humidity for that alarm, as well as the date the alarm was created.

## Admin Users

Admin users can add new alarms, edit existing alarms, and delete unneeded alarms.

To add a new alarm, press the plus button at the top of the list to go to the Add Alarm screen. To edit an alarm, press the edit icon in the upper right corner of that alarm's card to go to the Edit Alarm screen.

To delete an alarm, press the trash icon across from the alarm's name. You will be prompted to confirm. The alarm cannot be recovered after deletion is confirmed.



## Adding or Editing an Alarm

The Add Alarm screen has a field to enter the new alarm's name, and fields to enter the minimum and maximum temperature and humidity. Press Submit when you are satisfied to create a new alarm, or press the back arrow at the left of the header bar to return to the Alarms screen.

The Edit Alarm screen populates its fields with the alarm's values when you open it, but is otherwise the same as the Add Alarm screen. Press Submit to save your changes to the alarm, or press the back button to return to the Alarms screen.

14:29

← Add Alarm

Name

Minimum Temperature (° F):

Maximum Temperature (° F):

Minimum Humidity (%):

Maximum Humidity (%):

Submit

14:27

← Edit Alarm

Name

Refrigerated Storage

Minimum Temperature (° F):

Maximum Temperature (° F):

Minimum Humidity (%):

Maximum Humidity (%):

Submit

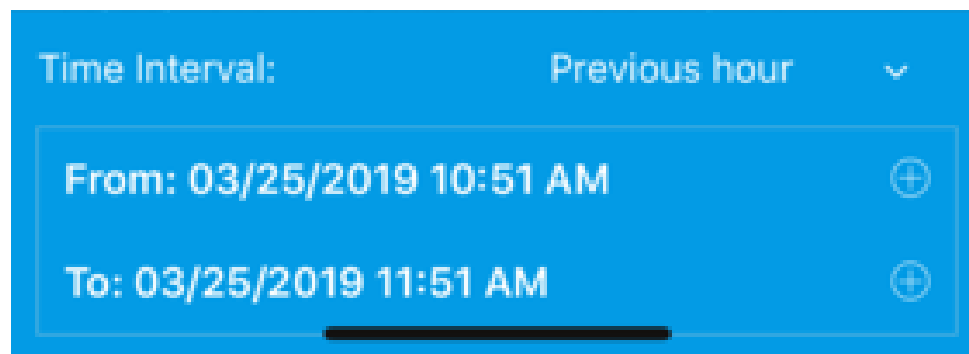
# Selecting a Date Range

The History and Graph tabs in the Cold Storage Device screen, have controls at the bottom to select a specific date range for the information being displayed.

By default, all readings within the last hour are displayed. To choose another pre-defined date range, press the words “Previous hour” to open a picker. You can choose to view all readings within the last hour, day, week, or month.

For a custom date range, the From and To dates can be modified individually:

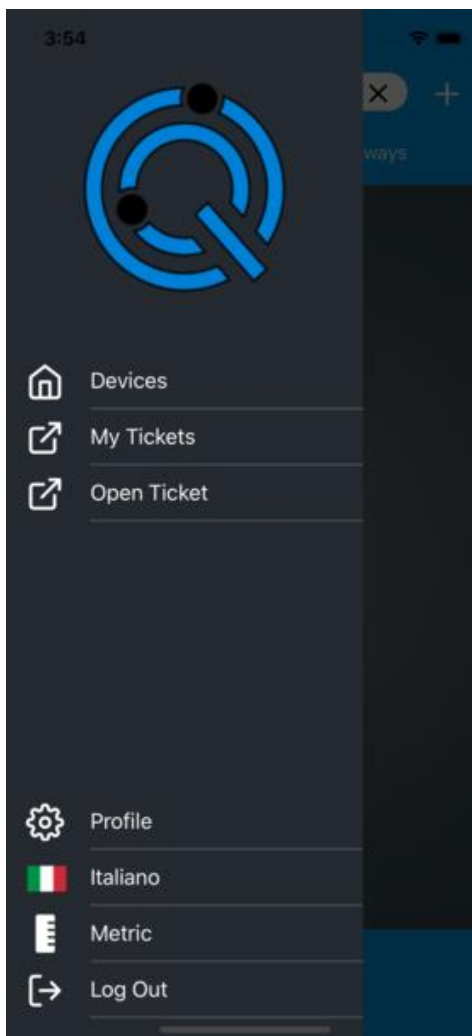
- ❑ On an iPhone, press the plus button opposite the From or To date to reveal a date spinner. The plus button will change to a minus button. Spin the year, month, and day dials to the desired values. To close the date spinner, press the minus button or the words “Time Interval”.
- ❑ On an android device, press the calendar icon opposite the From or To date to display a calendar. Select the desired date on the calendar to change the date range.



# Sidebar

The Sidebar can be accessed from any screen by swiping right from the left side of the screen.

- ❑ Select Devices to return to the Home screen.
- ❑ Pressing My Tickets or Open Ticket opens Quaenet's website in your web browser. Create a support ticket when you experience an issue with the app that requires Quaenet's attention.
- ❑ Select Profile to view your personal profile screen (see below).
- ❑ Select Italiano to change the interface language to Italian.
- ❑ Select Metric or Imperial to choose between metric and imperial units. This affects the display of temperature readings and geofence radii.
- ❑ Select Log Out to return to the Login screen. You won't receive any notifications while logged out.



# Profile

The Profile screen displays the personal information you have shared with Quaenet: your name, email, phone number, company, and your choice of measurement units.

To change your password or edit your profile, press one of the blue buttons at the bottom of the screen. This will launch Quaenet’s website in your web browser.



